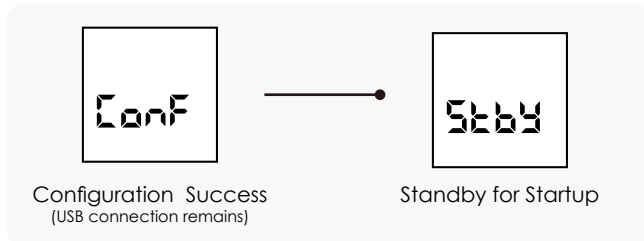
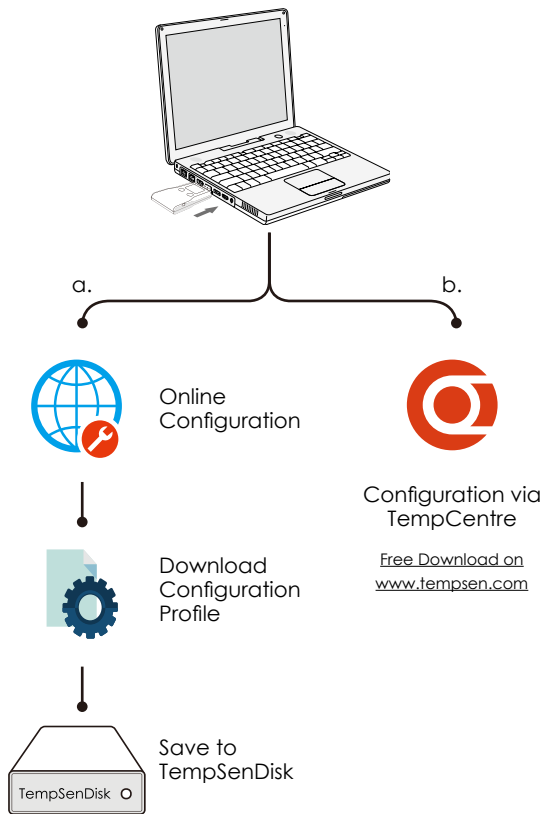


1> Configuration > a. Online Configuration

Connect Alpha data logger to PC via USB connection, open online configuration portal www.alphalogger.com in internet browser, then select the device model you are going to configure, input configuration parameters, and download configuration profile (.cfg) and save it to the logger created removable storage device "TempSenDisk".

The configuration file could be used for batch configuration by applying it to other devices of same model.

! Configuration profile could only be applied to product of same model. Configuration profile created contains **Local Time Zone** information, so please download new configuration profile when you are in different time zone to avoid time error.



1 > Configuration > b. Configuration via TempCentre

Connect logger to PC, open TempCentre software, move to **Configure Device**, input configuration parameters, and click **Apply** to complete configuration.

Please **DO NOT** remove logger from PC before you are prompted of configuration success.

2> Start and Stop recording

Press and hold the **Start/Stop** button for **3** seconds to start recording, **REC** appearing on LCD indicates start success.

Press and hold **Start/Stop** button until **Stop** (Stop) appears on home screen to stop recording.

3> Downloading Data

Connect Alpha data logger to USB port, and copy PDF report from **TempSenDisk** to your computer.

You could also download device using TempCentre software.

4> LCD Messages

▼ Home Screen

1	Overall Status	✗ Alarm	✓ OK
2	Overall Limit violation indication		
3	Current reading	23.3	°C
4	Remaining battery life in Days	900	DAY

Click **View/Mark** button to step through following recording summaries.

▼ Logging Statistics

1	Max, Min, Avg Value	38.7	°C
---	---------------------	------	----

▼ Statistics for each alarm zone

Examples below represent statistics for respective alarm zone.

1	Alarm Zone: High
2	Status: OK
3	Limit violation: No
4	Duration time: 0 minute

1	Alarm Zone: A2 (Multi-Alarm)
2	Status: Alarm
3	Limit violation: Yes
4	Duration time: 23.6 hours

1	Alarm Zone: Low
2	Status: Alarm
3	Limit violation: Yes
4	Duration time: 8.5 days
5	Channel: Humidity

5> Adding Time Mark

Press the **View/Mark** button for 5 seconds to add a time mark, "MARK" icon flashing indicates a time mark is about to be added, up to 9 marks available.

6> Battery

Remaining battery life displays on home screen, logger would stop working after battery life ran out.

Please pay attention to battery EXP date (Expiry Date) on the rear of each device every time before starting recording, any use beyond EXP date will not be guaranteed.



Remaining battery life begins to minus 1 day every calendar day after first configuration.



Battery life runs out



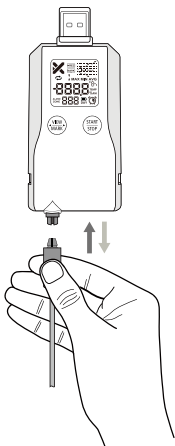
Battery inside is not rechargeable and replaceable. Please refer to respective technical data for specific battery life of each model.

7> External Sensor Probe¹



"NC." (No Connection) appears on LCD after sensor removed.

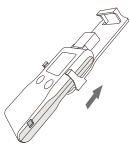
Removal of external sensor probe during recording or after configuration would lead to recording stop or start failure.



Please hold the connector of probe to install and remove external probe.

¹ External sensor probe only applies to specific Alpha models.

8> Mounting Bracket²



Please install device into bracket from bottom up.

² Mounting bracket only supplied with certain Alpha models.

9> Warranty

TempSen warrants this TempSen-branded hardware product against defects in materials and workmanship under normal use for a period of ONE (1) YEAR from the date of retail purchase by the original end-user purchaser ("Warranty Period"). If a hardware defect arises and a valid claim within the Warranty Period, as its option and to the extent permitted by law, TempSen will either (1) repair the hardware defect at no charge, using new parts or parts equivalent to new in performance and reliability, (2) exchange the new product with a product is new or equivalent to new in performance and reliability and is at least functionally equivalent to the original product, or (3) refund the purchase price of this product. TempSen may request that you replace defective parts with new or refurbished user-installable parts that TempSen provides in fulfillment of its warranty obligation. A replacement product or parts, including a user-installable part that has been installed in accordance with instructions provided by TempSen, assumes the remaining warranty of the original product or ninety (90) days from the date of replacement or repair, whichever provides longer coverage for you. When a product or part is exchanged, any replacement item becomes your property and the replaced item becomes TempSen's property. Parts provided by TempSen in fulfillment of its warranty obligation must be used in products for which warranty service is claimed. When a refund is given, the product for which the refund is provided must be returned to TempSen and becomes TempSen's property.

EXCLUSIONS AND LIMITATIONS

This Limited Warranty applies only to the hardware product manufactured by or for TempSen that can be identified by the "TempSen" trademark, trade name, or logo affixed to it. The Limited Warranty does not apply to any non-TempSen hardware product or any software, even if packaged or sold with the TempSen hardware. Manufacturers, suppliers, publishers, other than TempSen, may provide their own warranties to the end user purchaser, but TempSen, in so far as permitted by law, provides their products "as is". Software distributed by TempSen with or without the TempSen brand name (including, but not limited to system software) is not covered under this Limited Warranty. Refer to the licensing agreement accompanying the software for details of your rights with respect to its use.

TempSen does not warrant that the operation of product will be uninterrupted or error-free. TempSen is not responsible for the damage arising from failure to follow instructions relating to the product's use.

This warranty does not apply: (a) to consumable parts, such as batteries, unless damage has occurred due to a defect in materials or workmanship; (b) to cosmetic damage, including but not limited to scratches, dents, and broken plastic on ports; (c) to damage caused with non-TempSen products; (d) to damage caused by accident, abuse, misuse, flood, fire, earthquake, or other external causes; (e) to damage caused by operating the product outside the permitted or intended uses described by TempSen; (f) to damage caused by service (including upgrades and expansions) performed by anyone who is not a representative of TempSen or TempSen Authorized Service Provider; (g) to a product or part that has been modified to alter functionality or capability without the written permission of TempSen; or (h) if any TempSen serial number has been removed or defaced.

IMPORTANT: DO NOT OPEN THE HARDWARE PRODUCT. OPENING THE HARDWARE PRODUCT MAY CAUSE DAMAGE THAT IS NOT COVERED BY THIS WARRANTY. ONLY TEMPSEN OR AN AUTHORIZED SERVICE PROVIDER SHOULD PERFORM SERVICE ON THIS HARDWARE PRODUCT.



Please follow local regulations when recycling or disposing of Alpha data loggers.

Please go to www.alphalogger.com for online [Operation Instruction](#) . Please call us at +86 21 6768 5210 or send email to support@tempSen.com for technical assistance.

TEMPSEN

monitoring for
Life Science